

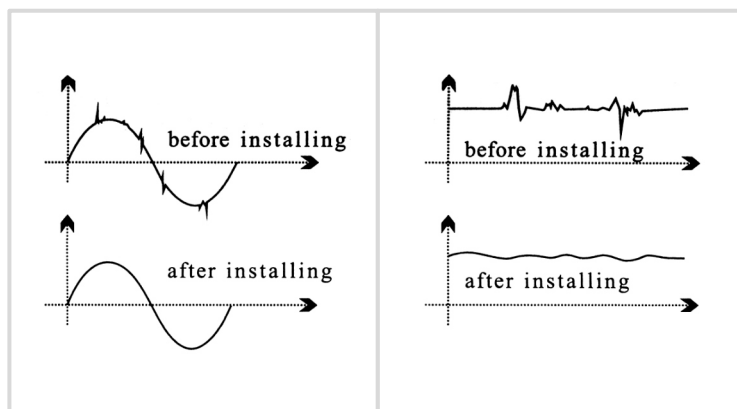
TECHNICAL FEATURES:

- ◆ **Voltage Stabilization:**
Balances voltage to protect appliances from damage caused by power surges.
- ◆ **Energy Optimization:**
Ensures only the necessary amount of electricity is used, preventing wastage.
- ◆ **Plug-and-Play Design:**
Ready to use straight out of the box, with no setup required.

NOTICE:

- ◆ Gently insert the device into outlets. Avoid using excessive force to prevent damage.
- ◆ Keep the device plugged in continuously for ongoing energy savings. Frequent unplugging may reduce its effectiveness.
- ◆ Ensure the device is out of reach of children for safety.
- ◆ If the indicator light is off, contact support at support@powerprogenius.com for assistance with replacement or repair.

ELECTRICITY SAVING DIAGRAMS:



Technical Parameter:

Rated voltage: 90V-250V
Rated frequency: 50 Hz-60Hz

Thank you for choosing Power Pro Genius!
We are committed to providing you with long-term savings and improved appliance performance.



Electricity Saving Device

The Smart Solution for Reducing Energy Waste and Long-Term Savings

Harness the latest in energy-efficient technology with Power Pro Genius, designed to regulate and optimize your electricity usage. This simple plug-in device stabilizes electrical flow, reduces energy waste, and helps you save money every month by improving the efficiency of your home or office.

Key Benefits:

- ◆ **Minimize Energy Waste:**
Make sure your appliances use only the energy they need.
- ◆ **Voltage Stabilization:**
Prevent power surges and protect your devices.
- ◆ **Extend Appliance Lifespan:**
Shield your electronics from overheating and excessive wear.
- ◆ **Effortless Operation:**
Plug-and-play with no ongoing maintenance required.
- ◆ **Long Term Savings:**
Enjoy long term savings by reducing your energy consumption.

Power Pro Genius helps you manage energy consumption long-term making your space more energy efficient and cost effective.

Power Pro Genius User Guide

INTRODUCTION:

Power Pro Genius is an electricity-saving device that uses the latest in energy-efficient technology. It optimizes energy use and reduces waste, making it ideal for both home and office. By stabilizing voltage and lowering energy consumption, Power Pro Genius helps you achieve long-term savings while protecting your appliances.

With dual benefits—protecting appliances from voltage surges and improving energy efficiency—Power Pro Genius helps you save long-term. Designed to manage power during peak times, it keeps your devices running smoothly without overheating or damage.



INSTRUCTIONS:

- 1. Setup:**
Plug the Power Pro Genius into any electrical outlet in your home. For optimal savings, consider using multiple devices depending on the number of appliances and their energy usage.
- 2. Check the Indicator Light:**
Once plugged in, ensure the indicator light is on, which shows that the device is functioning properly.
- 3. Use with Power Strips:**
You can connect the Power Pro Genius to extension cords or power strips for convenience. Just make sure it's properly connected to the power source for maximum efficiency.



HOW IT WORKS:

During peak times, the electricity supply to your home may come under higher pressure, leading to an increase in voltage. This excess voltage can result in overheating, inefficiency, and damage to your appliances, shortening their lifespan. Power Pro Genius stabilizes the voltage, ensuring that your devices receive only the power they need to function efficiently. This helps you:

- ◆ **Save Long-term** by lowering your energy consumption.
.....
- ◆ **Extend Appliance Lifespan** by preventing overloading and overheating.

USER GUIDE:

- ◆ **Installation:**
Simply plug the Power Pro Genius into any available outlet. No special tools or technical knowledge are required. The device starts saving energy immediately.
.....
- ◆ **Maintenance:**
No additional maintenance is needed. Once installed, the Power Pro Genius continuously works to stabilize voltage and reduce energy consumption.